



COMPACT 4G LTE  
M2M ROUTER



# DIGI TRANSPORT® WR11 FAMILY

Secure 3G/4G LTE cellular router for retail, kiosk and industrial control applications

The Digi TransPort WR11 and WR11 XT deliver a cost-optimized 4G LTE connection to mission critical M2M applications around the world. These cellular routers are ideal for connecting:

- Building and process automation controllers
- Smart grid assets (meters, switches, controllers)
- IP cameras and access controllers
- Remote data loggers, flow meters and sensing equipment
- Telco infrastructure controllers
- ATMs, kiosks and service terminals

The Digi TransPort WR11 XT provides a secure, reliable connection to industrial controllers, retail terminals and process automation equipment on third party sites or remote locations. This drop-in connectivity gives operators a way to reduce the cost of downtime and service calls and also increase revenue by bringing distributed sites online faster.

## BENEFITS:

- Global HSPA+ and 4G LTE support and certification
- Extremely resilient cellular connection through patented Digi SureLink™, VRRP+ protocol and dual SIM slots
- Enterprise routing features for security, logging and redundancy (e.g., stateful firewall, VPN, SNMP); no annual enterprise software license required
- Digi Remote Manager provides mass configuration, device management and troubleshooting tools
- Rugged aluminum enclosure, flanges and optional DIN rail clip for flexible mounting
- 5-year warranty standard—no additional cost

## RELATED PRODUCTS



Digi TransPort® WR21



Digi TransPort® WR44



Utility Communication Hub

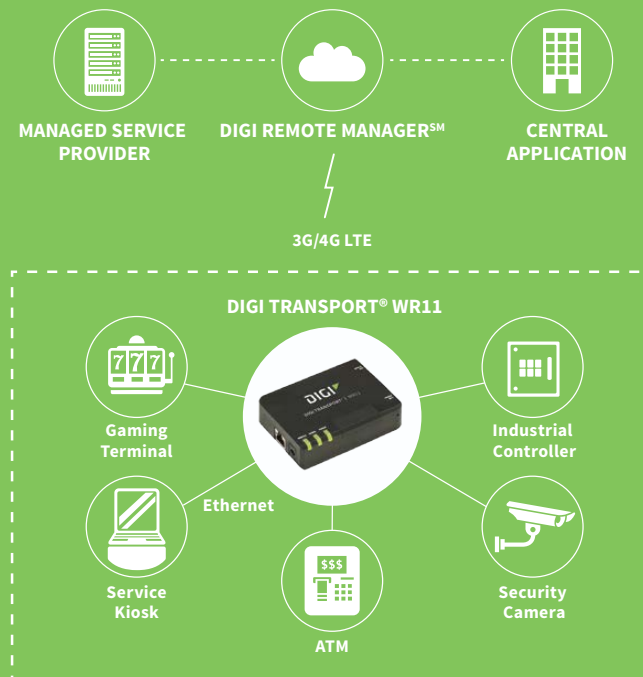


Accessories



Digi Remote Manager<sup>SM</sup>

## APPLICATION EXAMPLE



# SPECIFICATIONS

## Digi TransPort® WR11

## Digi TransPort® WR11 XT

### 3G/4G LTE SPECS

<b>LTE – NORTH AMERICA (L6)</b>	700/850/1700 (AWS)/1900 MHz; 2G/3G fall back to 850/1900 MHz; Transfer rate (max): 50 Mbps Up, 100 Mbps Down	
<b>LTE – VERIZON (L8)</b>	700/1700(AWS) MHz; No 2G/3G fall back; Transfer rate (max): 50 Mbps Up, 100 Mbps Down, Verizon Private Network, DMNR and PNTM Approved	
<b>LTE – EMEA/APAC (L7)</b>	800/1800/2600 MHz; 3G fall back to 850/900/2100 MHz and 2G fall back to 850/900/1800/1900 MHz; Transfer rate (max): 50 Mbps Up, 100 Mbps Down	
<b>HSPA+ - (U9)</b>	850/900/1700 (AWS)/1900/2100 MHz; Transfer rate (max): 5.76 Mbps Up, 21 Mbps Down	
<b>EVDO (CX)</b>	CDMA 1xRTT – 900/1800 MHz; EVDO-A/1xRTT; Transfer rate (max): 1.8 Mbps up, 3.1 Mbps Down	NA
<b>CONNECTORS</b>	1 x 50 Ω SMA (Center pin: female); 2x connectors for LTE models	
<b>SIM SLOTS</b>	2	
<b>SIM SECURITY</b>	Snap fit SIM slot cover	Screw-down SIM cover

### SOFTWARE & MANAGEMENT

<b>REMOTE MANAGEMENT</b>	Digi Remote Manager; SNMP v1/v2c/v3	
<b>LOCAL MANAGEMENT</b>	WebUI (HTTP/HTTPS); CLI (Telnet, SSH, SMS)	
<b>MANAGEMENT/TROUBLESHOOTING TOOLS</b>	FTP, SFTP, SCP; Protocol analyzer with PCAP for Wireshark; Event logging with Syslog and SMTP; NTP/SNTP	
<b>MEMORY</b>	20 MB RAM, 10 MB file space	

### ETHERNET

<b>PORTS</b>	1 RJ-45 port	
<b>PHYSICAL LAYER</b>	10/100Base-T	
<b>DATA RATE</b>	10/100 Mbps (auto-sensing)	
<b>MODE</b>	Full or half duplex (auto-sensing)	
<b>INTERFACE</b>	Auto MDI/MDIX	

### PHYSICAL

<b>DIMENSIONS (L X W X H)</b>	3 in x 4 in x 1 in (7.62 cm x 10.16 cm x 2.54 cm)	
<b>WEIGHT</b>	0.25 lb (0.11 kg)	0.5 lb (.22 kg)
<b>STATUS LEDS</b>	Power on, WWAN signal strength, WWAN service	
<b>ENCLOSURE</b>	Polycarbonate / IP30	Industrial (Metal) / IP30

### POWER REQUIREMENTS

<b>POWER INPUT</b>	5VDC	
<b>POWER SUPPLY</b>	5VDC power supply with locking barrel connector included; International plug kit includes UK, EU and Australia plug styles	
<b>POWER CONSUMPTION</b>	Typical 3.5 W; Max 15 W	

### ENVIRONMENTAL

<b>OPERATING TEMPERATURE</b>	0° C to +40° C (32° F to +104° F)	-30° C to +70° C (-22° F to +158° F) Reduced cellular performance above 60°C
<b>RELATIVE HUMIDITY</b>	5% to 95% (non-condensing)	

### APPROVALS

<b>GSM/UMTS</b>	PTCRB	
<b>CELLULAR CARRIERS</b>	Certified by most major carriers. See <a href="http://www.digi.com">www.digi.com</a> for a full list.	
<b>SAFETY</b>	UL 60950, CSA 22.2 No. 60950, EN60950	
<b>EMISSIONS/IMMUNITY</b>	CE, FCC Part 15 Class B, AS/NZS CISPR 22, EN55024, EN55022 Class B	

### WARRANTY

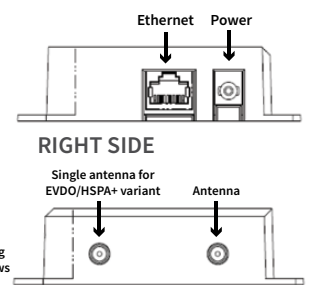
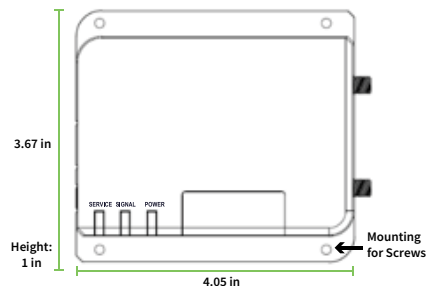
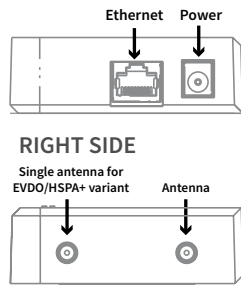
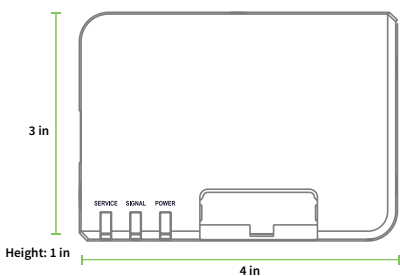
<b>PRODUCT WARRANTY</b>	5 years	
-------------------------	---------	--

DIGI TRANSPORT® WR11 - TOP

LEFT SIDE

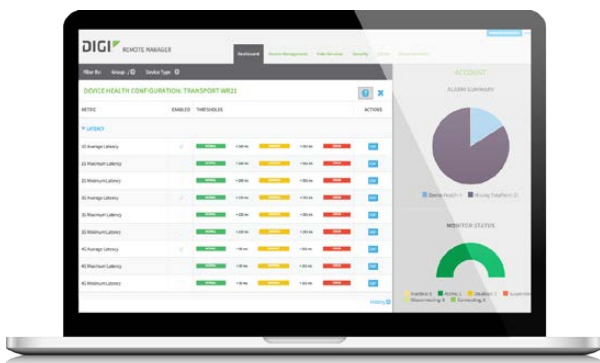
DIGI TRANSPORT® WR11 XT - TOP

LEFT SIDE



ENTERPRISE SOFTWARE	DESCRIPTION
<b>PROTOCOL SUPPORT</b>	HTTP, HTTPS, FTP, SFTP, SSL, SMTP, Device Cloud SNMP, SNMP (v1/v2c/v3), SSH, Telnet and CLI for web management; remote management via Digi Remote Manager; SMS management, protocol analyzer, ability to capture PCAP for use with Wireshark; DynDNS, Dynamic DNS client compatible with BIND9/No-IP/DynDNS
<b>SECURITY/VPN</b>	IP filtering, Stateful inspection firewall with scripting, address and port translation; VPN: IPsec with IKEv1, IKEv2, NAT Traversal; SSL, SSLv2, SSLv3, FIPS 197, Open VPN client and server; PPTP, L2TP; VPN Tunnels: 5. Cryptology: SHA-1, MD5, RSA; Encryption: DES, 3DES and AES up to 256-bit (CBC mode for IPsec); Authentication: RADIUS, TACACS+, SCEP for X.509; certificates; Content Filtering (via 3rd party); MAC Address Filtering; VLAN support
<b>ROUTING/FAILOVER</b>	IP pass-through; NAT, NAPT with IP Port Forwarding; Ethernet Bridging; GRE; Multicast Routing; Routing Protocols: PPP, PPPoE, RIP (v1, v2) OSPF, SRI, BGP, iGMP routing (multicast); RSTP (Rapid Spanning Tree Protocol); IP Failover: VRRP, VRRP+TM; Automatic failover/failback to second GSM network/Standby APN
<b>OTHER PROTOCOLS</b>	DHCP; Dynamic DNS client compatible with BIND9/No-IP/DynDNS; QoS via TOS/DSCP/WRED

## DIGI REMOTE MANAGER®



### CAPABILITIES

- Centralized management of remote devices over 3G/4G LTE
- Define standard configurations and automatically monitor individual devices for PCI security compliance
- Report and alert on performance statistics, including connection history, signal quality, latency, data usage and packet loss
- No servers or applications to operate and maintain
- Complete tasks for your entire device network in minutes
- Edit configurations and update firmware for your individual devices or groups
- Monitor the status and location of your remote device via a web browser
- Active or deactivate cellular lines and monitor data to ensure you never incur overage charges

### INFRASTRUCTURE

- Hosted in multiple commercial-grade SAS 70 certified facilities in North America and Europe
- Superior availability, operating to 99.9% or greater
- Open APIs available to support application development

### SECURITY

- Certified SSAE-16 and ISO27001 facilities
- Member of the Cloud Security Alliance
- Over 175 Security Controls in place to protect your data
- Enables compliance with security frameworks like PCI, HIPAA, NIST and more
- Earned SkyHigh's Cloud Trust Program highest ranking of Enterprise-Ready

PART NUMBERS	DESCRIPTION
WR11-U900-DE1-SW	Digi TransPort WR11, International , HSPA+
WR11-L600-DE1-SU	Digi TransPort WR11, North America LTE, HSPA+
WR11-L700-DE1-SW	Digi TransPort WR11, EMEA/APAC LTE, HSPA+
WR11-L800-DE1-SU	Digi TransPort WR11, Verizon LTE Single Mode
WR11-U900-DE1-XW	Digi TransPort WR11 XT, International, HSPA+
WR11-L600-DE1-XU	Digi TransPort WR11 XT, North America LTE, HSPA+
WR11-L700-DE1-XW	Digi TransPort WR11 XT, EMEA/APAC LTE, HSPA+
WR11-L800-DE1-XU	Digi TransPort WR11 XT, Verizon LTE Single Mode

**DIGI SERVICE AND SUPPORT** / You can purchase with confidence knowing that Digi is always available to serve you with expert technical support and our industry leading warranty. For detailed information visit [www.digi.com/support](http://www.digi.com/support).

© 1996-2017 Digi International Inc. All rights reserved.  
All trademarks are the property of their respective owners.

**DIGI INTERNATIONAL WORLDWIDE HQ**  
877-912-3444 / 952-912-3444 / [www.digi.com](http://www.digi.com)

**DIGI INTERNATIONAL FRANCE**  
+33-1-55-61-98-98 / [www.digi.fr](http://www.digi.fr)

**DIGI INTERNATIONAL JAPAN**  
+81-3-5428-0261 / [www.digi-intl.co.jp](http://www.digi-intl.co.jp)

**DIGI INTERNATIONAL SINGAPORE**  
+65-6213-5380

**DIGI INTERNATIONAL CHINA**  
+86-21-50492199 / [www.digi.com.cn](http://www.digi.com.cn)

91002585  
B8/317

